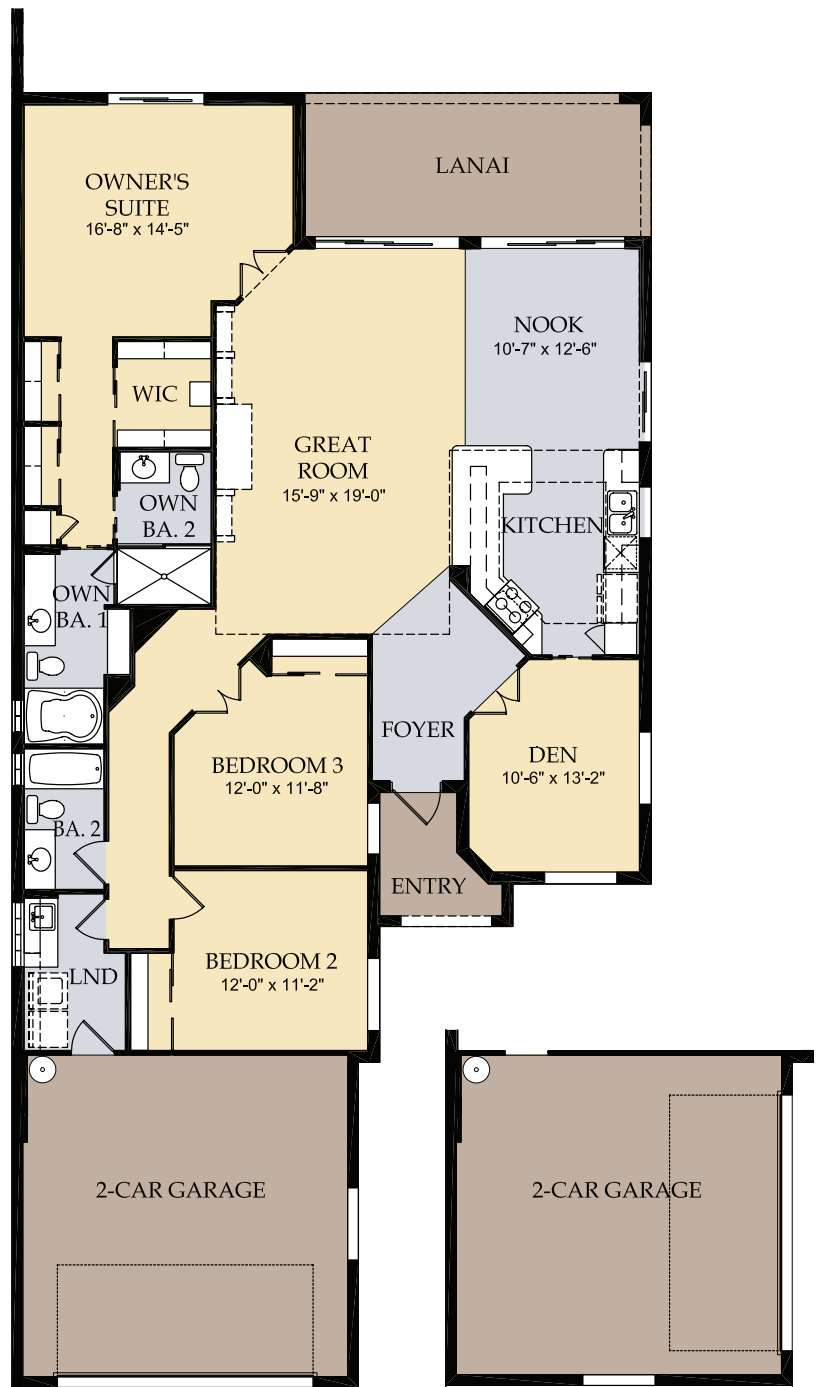


# Oakmont

## Luxury Single-Family Home

3 Bedrooms, Den,

2 Baths, 2-Car Garage



Side Load Garage Option

### Oakmont Square Footage

Residence Area	2,003 sq. ft.
Garage Area	450 sq. ft.
Entry Porch	52 sq. ft.
Lanai	195 sq. ft.
<b>Total</b>	<b>2,700 sq. ft.</b>

Artist's renderings are conceptual only. Exact dimensions and spatial arrangements on this plan are approximate and may vary in final construction.

# Quality Features - Oakmont

## Custom Interior Features

- Tile floors in foyer, kitchen, breakfast nook, baths and laundry
- Smooth finish walls in kitchen and baths
- Decorative baseboard trim
- Upgraded raised-panel interior doors
- Solid surface window sills
- Walk-in owner's closet
- Rounded wall corners, per plan
- Decorative chrome door hardware

## Exterior Features

- Tile roof
- Designer exterior finish
- Ventilated aluminum soffits
- High-grade Sherwin-Williams® latex paint
- Decorative brick paver driveway
- Large, private screened lanai
- Seamless gutter system
- Galvanized steel storm shutters

## Kitchen Features

- Wood kitchen cabinets with Corian® countertops
- GE® refrigerator/freezer with lighted door dispenser for ice and water
- GE® built-in microwave
- GE® multiple-cycle dishwasher
- GE® clean design electric range with self-cleaning oven
- White Corian® kitchen sink with electric garbage disposal
- Moen® faucet with pullout sprayer

## Bathroom Features

- Owner's shower with enclosure
- Wood bath cabinets
- Cultured marble vanity tops
- Tiled shower walls
- Decorative Moen® faucets

## Architectural Features

- Steel-reinforced concrete block construction
- Engineered roof trusses with hurricane straps

## Energy Savings and Electrical Features

- Ceiling fan prewires, per plan
- Decora rocker switches
- Cable TV and telephone outlets, per plan
- Structured media center for low voltage wiring
- Smoke detectors
- R-30 ceiling insulation
- Automatic garage door opener with remote controls
- Insulated fiberglass entry door
- Exterior lighting
- Wired security system with alarm and keypad
- Exterior waterproof electrical outlets
- Lennox® central heating and air conditioning system with programmable thermostat
- Double-pane insulated screened windows
- Energy-efficient water heater
- GE® full-size washer and dryer

## Special Features

- One-stop-shop financing through Pulte Mortgage offering a complete array of conventional financing programs at competitive rates
- Pulte Protection Plan™ – An insured warranty and customer care department that makes "peace of mind" a reality and home ownership a pleasure.